



## MASTER SERIES

### MASTER WHISK

Ref : FT001



## DESCRIPTION

- Sturdy, powerful, handy.
- Safety button.
- Variable speed as standard.
- Double insulation.
- Stainless steel ejectable whisks for easy cleaning and perfect hygiene.
- Non detachable whisk : ensures durability of the product.



## USE

The Master Whisk is ideal to prepare with ease dough creams and especially egg whites, whipped slowly and finished at high speed to ensure an abundance and unmatched hold.

You will also work easily : sponge cake, crepe dough, almond paste, meringues, butter creams, soufflés, whipped cream, sauces, curd creamy cheese, mayonnaise.

**Capacity : 5 to 20 Liters**

## MAINTENANCE

Dismantle whips from their attachments by pushing strongly on the cups, then you can securely rinse the whisks under running water.

Wash the motor block with a sponge or with a slightly damp cloth.

**Never clean this machine with water jet spray or in the dishwasher.**



### TECHNICAL DATA

OUTPUT MAX	600 W
SPEED	300 to 900 R.P.M.
VOLTAGE	110 - 120 V or 220 - 240 V
TOTAL LENGTH	650 mm
SHAFT LENGTH	245 mm
DIAMETER	110 mm
ACTUAL WEIGHT	3,3 kg

[www.dynamicmixers.com](http://www.dynamicmixers.com)

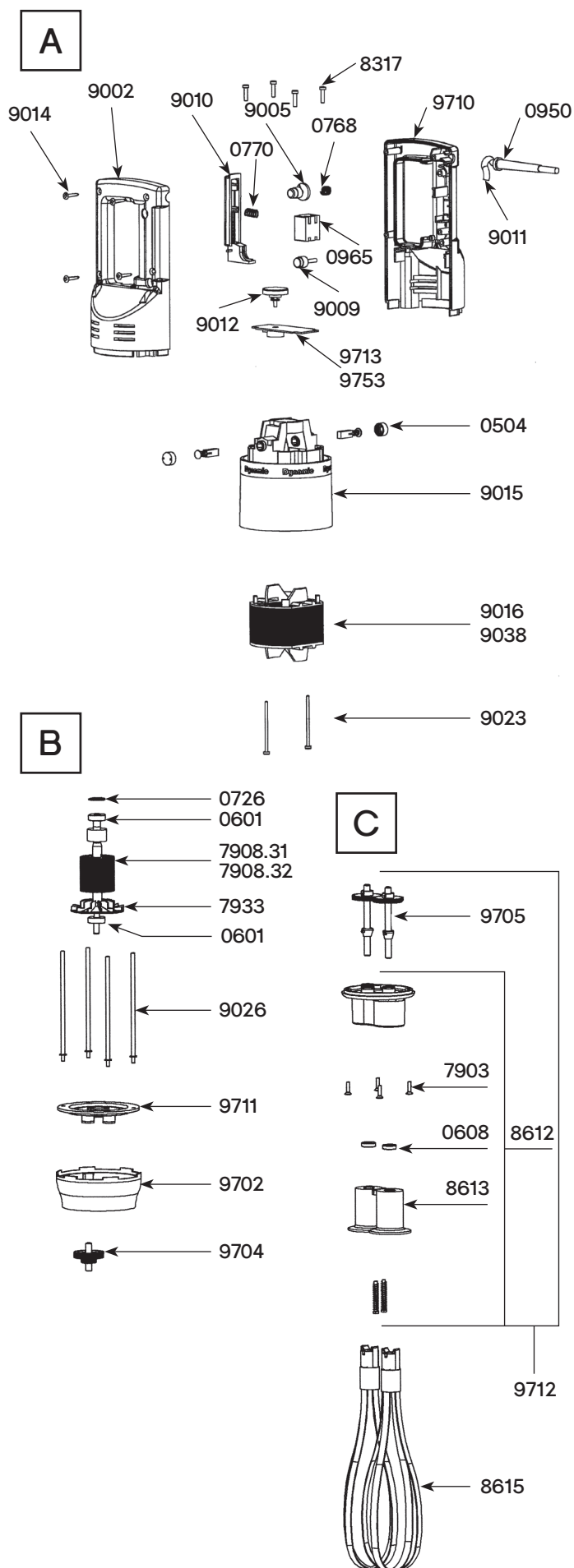
Dynamic - 518 rue Léo Baekeland BP57 - 85290 Mortagne sur Sèvre

Tél : +33 (0)2 51 63 02 72 • E-mail : [contact@dynamicmixers.com](mailto:contact@dynamicmixers.com)

Follow us on social networks !



# TECHNICAL SHEET



## Parts list

## Code

Carbon brushes (2)	0504
Ball bearing	0601
Waterproof seal	0608
Squeezing washer	0726
Pin 3 X 20	0744
Pin 3 X 14	0745
Safety button return spring	0768
Lever return spring	0770
Wall bracket	0881
Strain relief 230 V	0950
Strain relief 115 V	0950.1
Switch	0965
Capacitor	0972
Capacitor + filter	0972.1
ID label 115 V	1019
ID label 230 V	1020
Dynamic label	1027
Brace screws (4)	7903
Rotor 115 V	7908.31
Rotor 230 V	7908.32
Fan	7933
Brace screws (4)	8317
Holder + plastic ejector + seal	8612
Plastic ejector (pair)	8613
Whisk only (pair)	8615
Half handle (button side)	9002
Safety button	9005
Plug	9009
Control lever	9010
Power cord 230 V	9011
Variable speed control button	9012
Handle screws (4)	9014
Motor housing brush holder	9015
Stator 230 V	9016
Field brace screws (2)	9023
Braces	9026
Stator 115 V	9038
Power cord 115 V	9040
Carbon brush wires (230 V)	9043
Power cord (Australia)	9066
Power cord (UK)	9067
Carbon brush wires (115 V)	9143
Lower aluminum housing	9702
Middle gear & shaft	9704
Output gear & shaft + Pins	9705
Complete handle 230 V	9706
Complete handle 115 V	9706.1
Half handle (label side) 230 V	9710
Half handle (label side) 115 V	9710.1
Plate w/ 3 seals	9711
Holder without gear	9712
Variable speed control board 230 V	9713
Variable speed control board 115 V	9753