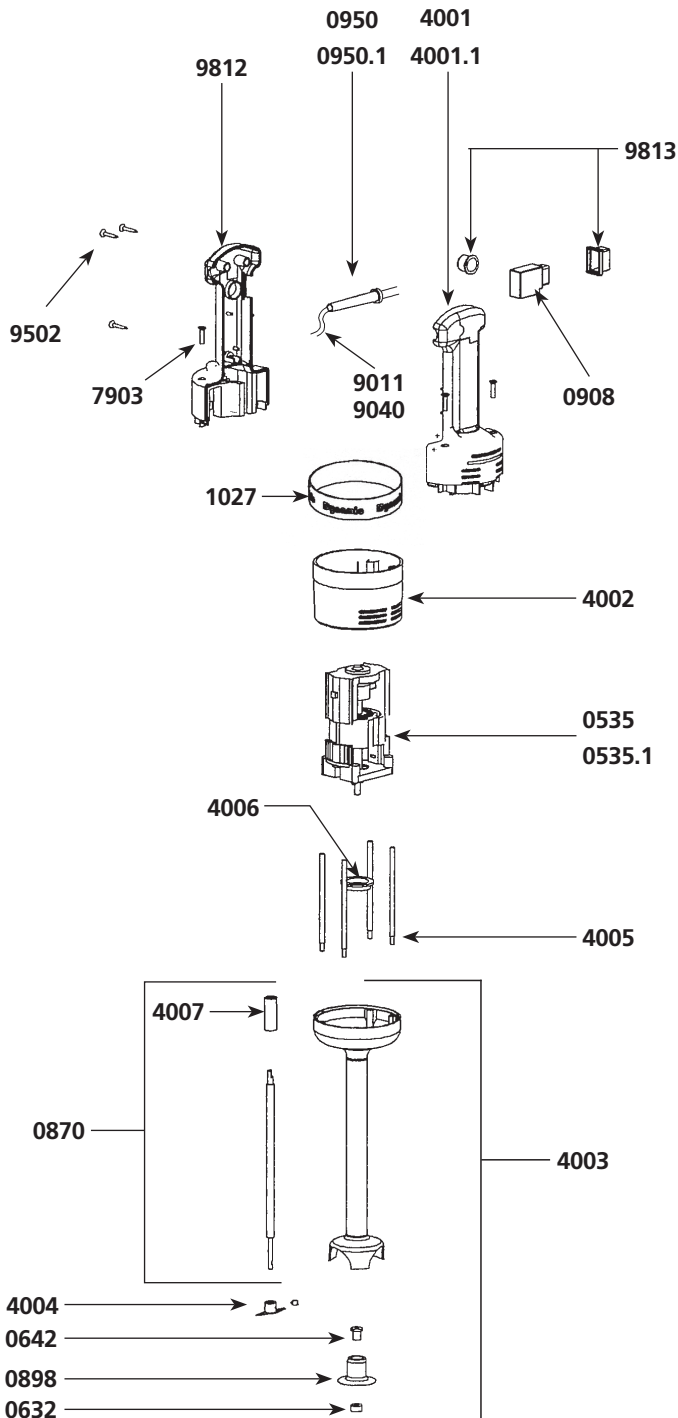


Parts list

Code

Motor 230 V	0535
Motor 115 V	0535.1
Waterproof seal	0632
Self-lubricating ring	0642
Stainless steel shaft + coupling	0870
Bearing only	0898
Wall bracket	089959
Non-locking switch	0908
Strain relief 230 V	0950
Strain relief 115 V	0950.1
Dynamic label	1027
Label w/ serial number 230 V	1081
Label w/ serial number 115 V	1082
Complete handle 230 V	4000
Lower half handle w/ label 230 V	4001
Lower half handle w/ label 115 V	4001.1
Upper motor housing	4002
Foot assembly w/ bearing (exc. Shaft + blade)	4003
Cutter blade	4004
Braces (4)	4005
Ball bearing ring	4006
Coupling sleeve	4007
Filtering capacitor	4008
Carbon brushes (2) 230 V	4050
Carbon brushes (2) 115 V	4050.1
Brace screws (4)	7903
Power cord 230 V	9011
Power cord 115 V	9040
Power cord (Australian)	9066
Power cord (English)	9067
Handle screws (3)	9502
Upper half handle	9812
Switch protector	9813



089959

